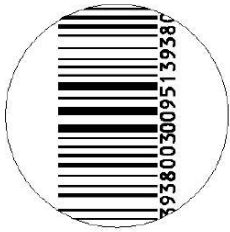


Standard RF Round Label R42

Barcode



LUCATRON®



Product Code

RF standard label R42 D-BC-2K-c76
Article No. 3068-135

Label Dimensions

Label MD Length..... $42 \pm 0.5 \text{mm} (1,65" \pm 0,0197")$
Label CD Length..... $42 \pm 0.5 \text{mm} (1,65" \pm 0,0197")$
Label Thickness..... $0.22 \text{mm} \pm 0.015 \text{mm}$
Liner Width (CD)..... $44 \pm 1.0 \text{mm} (1,73" \pm 0,0394")$
Label Gap (MD)..... $2 \pm 0.5 \text{mm} (0,08" \pm 0,0197")$
Hot melt adhesive.....934D Henkel
Circuit Side.....Green ink
Material construction..... $50 \mu\text{m AL} + 15 \mu\text{m CPP} + 10 \mu\text{m AL}$

Technical Specifications

Resonance Frequency $8.2 \text{MHz} \pm 4\%$
Effective Signal Volume..... $>1600 \text{cm}^3$
Quality Factor * ≥ 65
Deactivation Rate $\geq 99.9\%$
Reactivation Rate $\leq 5\%$
Version.....max 2% bad labels per reel,
not marked

Environmental Constraints

Recommended Storage
Temperature..... $12^\circ\text{C} - 25^\circ\text{C} (54^\circ\text{F} - 77^\circ\text{F})$
Humidity.....55% maximum
Shelf Life.....2 years from date of
manufacture

*Factor is depending on climate conditions and on type of Q-factor
measuring equipment used.
All technical details are subject to technical modification without
prior notice.

Roll Specifications

Paper	80g thermo transfer
Diameter of core	76mm
Max roll diameter	195mm
Number splices	10 maximum
Net weight/carton	10.7 kg
Gross weight/carton	11.35 kg
Carton dimensions	495x210x220 mm
Rolls per carton	10
Cases per pallet	50
Labels per roll	2,000

Product Application Guidelines

- Place within 76mm(3") of bar code.
- Place in least conspicuous location.
- Do not cover warnings, expiration dates, or important consumer information
- No specific label orientation is required

Labels will be always supplied according to above mentioned
quality. Especially in regards to deactivation rate,
reactivation rate, Q-factor and center frequency and
effective volume.



Member of the All4Labels
Global Packaging Group



info@rakosl.com | www.rakosl.com